



KANSAS GEOLOGICAL SOCIETY

# BULLETIN

Volume 95 Number 4

July - August 2020

Established 1925

## IN THIS ISSUE

**KGS Board Minutes from April and May**

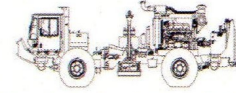
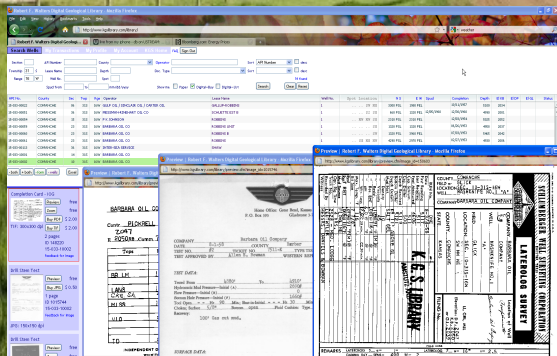
**In Memoriam - Bruce Reed**



Your 1/8 page ad here

Use Your KGS Library  
For All Your Printing Needs  
Old photos?  
Old documents?  
We can scan them for you!

**Robert F. Walters Digital Library**  
The most complete source for Kansas data  
**Database updated nightly**  
Day or Night  
You can get to the data as you need it  
[www.kgslibrary.com](http://www.kgslibrary.com)  
To Join: call 316-265-8676



*Proudly Celebrating 25+ Years  
Acquiring Seismic Data Throughout the  
Continental United States*

**WICHITA**

Nicolle Jausel  
(316) 636-5552

Nicolle@paragongeo.com

**DENVER**

Kim Nordberg  
(303) 888-8885

Knordberg@paragongeo.com

**HOUSTON**

Brent Propst  
(832) 643-5158

Bpropst@paragongeo.com

**OKLAHOMA CITY**

Joe Broussard  
(405) 213-9859

Jbroussard@paragongeo.com

website: [www.paragongeo.com](http://www.paragongeo.com)

**We Invite You  
To join**

*Kansas  
Geological  
Foundation*

*\$50.00 membership is  
tax deductible*

*Call 316-265-8676*

*Or send checks to:  
Kansas Geological Foundation  
212 N. Market, Ste. 100  
Wichita, KS 67202*

# Table of Contents

---

**Features:** No featured event or article 12

**KGS Events:** No events scheduled

## **Departments & Columns:**

<b>KGS Tech Talks</b>	<b>4</b>
<b>President's Letter</b>	<b>7</b>
<b>Advertiser's Directory</b>	<b>8</b>
<b>In Memoriam</b>	<b>9</b>
<b>KGS Board Minutes</b>	<b>12-15</b>
<b>Professional Directory</b>	<b>18</b>
<b>Kansas Geological Foundation Cornerstone and KGF News</b>	<b>20-21</b>
<b>Kansas Geological Foundation Memorials</b>	<b>22-24</b>
<b>Exploration Highlights</b>	<b>26-27</b>

## **ON THE COVER:**

**Alluvial Fan in Death Valley, CA**

**Photo by Marli Miller**

## **CALL FOR PAPERS**

The Kansas Geological Society Bulletin, which is published bimonthly in electronic format, seeks short papers dealing with any aspect of Kansas geology, including petroleum geology, studies of producing oil or gas fields, and outcrop or conceptual studies. Maximum length of papers is 6 pages as they appear in the Bulletin, including text, references, figures and/or tables, and figure/table captions. Inquiries regarding manuscripts should be sent to [manager@kgslibrary.com](mailto:manager@kgslibrary.com) or mailed to 212 N. Market, Ste. 100, Wichita, KS 67202. Specific guidelines for manuscript submission appear in each issue of the Bulletin, which can also be accessed on-line at the Kansas Geological Society web site at <http://www.kgslibrary.com>

# SOCIETY Technical Meetings

**All Technical Meetings are Canceled Until Fall**

*Save the Date*  
*KGS 2020 Golf Tournament September 28, 2020*  
*Terradyne Country Club Wichita, KS*

Please remember to check the website for the most up to date information on Technical Talks  
<http://www.kgslibrary.com/techtalks.cfm>

*Tech Talks are held at Landmark Square*  
*212 N. Market—4th floor*  
*In the Wisdom Center*



*Note: For those geologists who need 30 professional development hours (pdh) to renew their licenses, there will be a sign-in sheet at each presentation and also a certificate of attendance.*

# KANSAS GEOLOGICAL SOCIETY



## BOARD OF DIRECTORS

---

### PRESIDENT

Tim Lauer

### PRESIDENT-ELECT

Brian Fisher

### SECRETARY

Tom Dudgeon

### TREASURER

Robert Stozle

### DIRECTORS

Wes Hansen

Doug Davis

John Hastings

### ADVISORS

Doug Louis

Kevin Davis

## COMMITTEE CHAIRMEN

---

### Advertising

Kent Scribner

### Advisory

### Annual Banquet

Doug Davis

### Bulletin

Wesley Hansen

### Continuing Education

### Distinguished Awards

Wesley Hansen

### Environmental

Kent Matson

### Field Trip

Jerry Honas

### Fishing Tournament

### Future Plans

Toby Eck

### Golf

Rob Patton

### Historian

Larry Skelton

### Library

Ted Jochems

### Membership

Larry Friend

### Nomenclature

John H. Morrison, III

### Picnic

Beth Isern

### Public Relations

### Shooting Tournament

Larry Richardson

### Technical Programs

Doug Davis

### Technical Committee

Ryan Dixon

### Finance Committee

Tim Hellman, Chairman

Members: Rocky Milford, Chuck Brewer, David Doyel, and Tom Funk

## A.A.P.G. DELEGATES

---

Douglas Davis  
2021

Wesley Hansen  
2021

## BULLETIN STAFF

---

### EDITOR

Wes Hansen (316) 772-6188

### ADVERTISING

Kent Scribner  
Stelbar Oil Corp. (316) 264-8378

### MEMORIALS

Wesley Hansen

### EXPLORATION HIGHLIGHTS

John H. Morrison, III  
Independent O&G (316) 263-8281

### STATE SURVEY

KS Geological Survey (785) 864-3965

### SOCIETY NEWS

KGS Library (316) 265-8676

### MANAGER

Wes Hansen (part time) (316) 265-8676

## K.G.S. LIBRARY

---

PHONE 316-265-8676 FAX 316-265-1013

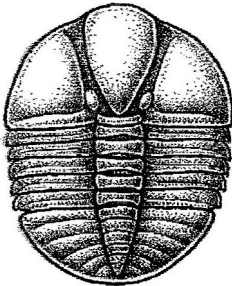
email: [frontdesk@kgslibrary.com](mailto:frontdesk@kgslibrary.com) or

Web: [www.kgslibrary.com](http://www.kgslibrary.com)

The KGS *Bulletin* is published bi-monthly by the Kansas Geological Society, with offices at 212 North Market, Wichita, Kansas 67202 Copyright 2020, The Kansas Geological Society. The purpose of the *Bulletin* is to keep members informed of the activities of the Society and to encourage the exchange and dissemination of technical information related to the Geological profession. Subscription to the *Bulletin* is by membership in the Kansas Geological Society. Limited permission is hereby given by the KGS to photocopy any material appearing in the *KGS BULLETIN* for the non-commercial purpose of scientific or educational advancement. The KGS, a scientific society, neither adopts nor supports positions of advocacy, we provide this and other forums for the presentation of diverse opinions and positions. Opinions presented in these publications do not reflect official positions of the Society.



Twenty-two Trucks Serving  
Kansas—Colorado—Texas—Nebraska—Illinois  
DST's  
Back Pressure testing (G1 & G2)  
Slick line services using the same Weatherford  
Electronic Pressure Gauges used on DST's



1-800-728-5369  
FAX 1-785-625-5620

www.trilobitetesting.com  
trilobite@eaglecom.net

SHOPS LOCATED IN:  
Hays, KS  
Scott City, KS  
Pratt, KS  
Hugoton, KS  
Oberlin, KS  
Clay City, IL

## CAN YOU NAME THE CRITTER?

Sponsored by Trilobite Testing, Inc.

Is your paleo up to date?

If you know the name of the trilobite,  
submit your guess via e-mail to  
manager@kgslibrary.com

Remember that *Trilobite Testing* is  
sponsoring your efforts, so be sure to thank  
Paul Simpson the next time you see him.

**CONGRATULATIONS!!**  
**Randy Lilak correctly identified**  
**The last one as: Harpides**

**Bulletin committee members and PhD's in  
Paleontology are prohibited from entering.**



### ***Kansas Geological Society (KGS) Medallion for Scientific Distinction and Excellence***

The Kansas Geological Society (KGS) Medallion for Scientific Distinction and Excellence may be given annually for peer-recognized, sustained significant scientific contributions to all facets of applied Kansas geology, including work either in Kansas or in surrounding states if the latter contributions pertain directly and significantly to Kansas geology. No more than one award may be given each year, an award does not have to be given every year, and members of the KGS Awards Committee that handle nominations for this award cannot nominate themselves for this award. The candidates need not be active KGS members, and they must be living at the time of selection. The primary consideration in the selection of a candidate shall be his or her sustained, published, significant contributions to any facet of Kansas geology. Contributions may be varied in form such as development of geologic concepts, advancement in discovery thinking, and recognized leadership in exploration concepts. Oral and/or written publications in peer-reviewed geological venues is a requisite criterion for any candidate for this award. The name of a candidate shall be presented by the Awards Committee to the KGS Board of Directors for their approval. Once approved, the recipient shall be presented an appropriate award in the form of a medallion or plaque recommended by the Awards Committee and approved by the Board of Directors at the annual business meeting of the society. This is a new award given by the KGS for distinction and achievement in Geological research in Kansas.

Awards Committee members are Sal Mazzullo, Mike Dealy and Alfred James.

# President's Letter

Dear Members,

We work in the best industry in the world. We search for buried treasure without putting on a SCUBA tank. We also live in a country with personal freedom and the unique situation which allows mineral ownership to work in the interest of our country and our own energy security. Landowner and oilman come together in a special opportunity to provide wealth, security, and provide for the common good.

Cheap energy has enabled our country spectacular opportunity, and while we would prefer to have a better price sometimes, inexpensive energy benefits us all. A sweet spot will always be found and a break-even point can always be met, and exceeded.

What used to take 5,000 barrels to break even, may now take 9,000 barrels, but a 40,000 or 50,000 barrel well provides abundant returns in an environment that sees our commodity normally increase in value.

There is no other investment that offers the volatility and opportunity if we can respond to the economic conditions dictated for profits to be captured. Oil remains a finite source. More importantly, it powers our world. And will for the foreseeable future.

A talk was given to our membership in February by Bill Coffey on Rare Earths. A slide I recall talked about the amazing amount of stored energy held within a quart of oil. It mentioned that oil is so energy dense that if it didn't exist we would have to invent it. Others may think, or wish, we are in the twilight of the fossil fuel energy cycle, but nothing even comes close to replacing it. Cheap energy is a catalyst for wealth of nations.

*A single gallon of gasoline contains approximately forty megajoules of chemical energy. Dividing energy by volume yields an energy density of ten billion joules per cubic meter. Gasoline is ten quadrillion times more energy-dense than solar radiation, one billion times more energy-dense than wind and water power, and ten million times more energy-dense than human power. (Bradley E. Layton 2008: A Comparison of Energy Densities...)*

I still love what I do, and I think you probably feel the same. Once you have tasted our business it's hard to turn your back on it. Through the bitterness and trials we search for oil with a bit, and once found, the exhilaration will not be forgotten, nor let go of us completely.

The easiest place to find oil is still on our maps and we will show those who share the dream with us, that hope is not dead. I encourage you to remain hopeful. We are the future of our industry and our energy dependence.



Continued on page 10

## AAPG Section Meeting Updates For 2020

Southwest	June 23-26	Ruidoso, N.M.
Eastern	Sept. 13-15	Champaign, IL
RMAG	Canceled	
Gulf Coast	Sept. 30-Oct 2	Lafayette, LA
Mid-Continent Biennial Field Conference Postponed until Fall of 2022      Rolla, MO		

### ADVERTISER'S DIRECTORY

Duke Drilling	<i>page</i> 25
Kansas Geological Foundation	19
Murfin Drilling Company, Inc	25
PARAGON Geophysical Services, Inc	2
Professional Directory	18
Trilobite Testing	6
Walters Digital Library	2, 16

Log in to  
Walters Digital Library  
At  
[www.kgslibrary.com](http://www.kgslibrary.com)

Log in as our guest  
and see the Society's Database  
A convenient way to see what  
you might want to order!  
Call or email your order to:  
316-265-8676  
[frontdesk@kgslibrary.com](mailto:frontdesk@kgslibrary.com)

### ADVERTISER'S RATES: 2020

Full Page	B&W	Color
6 issues	\$2,000	\$2,500
3 issues	\$1,080	\$1,325
1 issue	\$480	\$525
<b>1/2 Page</b>		
6 issues	\$1,000	\$1,500
3 issues	\$540	\$825
1 issue	\$225	\$350
<b>1/4 Page</b>		
6 issues	\$600	\$900
3 issues	\$325	\$525
1 issue	\$150	\$250
<b>1/8 Page</b>		
6 issues	\$300	\$500
3 issues	\$175	\$325
1 issue	\$75	\$185
<b>Professional Ad (Business Card)</b>		
6 issues	\$90	\$180

*For one-time ads, call Kent Scribner at 316-264-8378*



# *In Memoriam*

## **KGS and Industry Members Lost in 2020**

Bruce A. Reed  
1953 - 2020



Reed, Bruce A. 67, unexpectedly passed away Sunday, May 3, 2020. Bruce was born in Wichita, KS to George and Helen Reed on March 30, 1953, they precede him in death. Like his father, he was a key component to Kansas' oil and gas industry and owner of TerraTech Energy. A die-hard Shocker and Steelers fan, he loved his sports. He was an amazing father, grandfather, husband, brother and friend to many. He is survived by his wife Margaret Casanova, siblings Craig Reed of Dallas, Leslee Reed of Wichita, children Melissa Reed of NYC, Michael (Krista) Reed of Wichita and Matthew (Audrey) Reed of Oakland, grandsons Parker and Drake Reed of Wichita; step-children Rob Nelson of NYC, Julie (Julio) Guerrero of SF, Tony (Karen) Nelson and Jason Nelson of Wichita. In lieu of flowers, memorials can be made in Bruce's name to Victory in the Valley, 3755 E. Douglas, Wichita, KS 67218. Due to these unforeseen circumstances, a funeral will not be held, but a Celebration of Life Memorial Service will be announced at a later date.

---

---

**316-265-8676**



**Let Us Print Your Geo Reports  
And Save Your Time For Finding More Oil & Gas  
Top Quality Color Printing For Our Membership**

**Email your files to: [kgsorders@gmail.com](mailto:kgsorders@gmail.com)  
The Kansas Geological Society & Library**

As the world continues to grow an India and China, collectively one third of the world's population becomes developed, the need for energy well not decrease without a concurrent decrease in lifestyle. And we don't seem to be headed that way.

Any current geologist should see benefits and the responsibility to help each other, to share ideas with one another, to get ideas drilled together, to keep our lives improving. Do not underestimate the role you play in producing oil. Your knowledge base cannot be left to wither.

When we share our knowledge, wells are drilled, oil is found, and new ideas are generated. The cycle continues, and will continue, until we run out of cheap energy or find an acceptable alternative.

While cheap oil will run out at some point. It's abundant now, but it will likely be gone before our youngest members pass.

Our faith and hope in our future will not be eliminated or destroyed unless we ourselves decide that to hope is too impossible. But that only removes us, as an individual, from the opportunity. I am not ready to remove that hope, or myself from the opportunity. And I also think you should not either.

Be prepared.

Tim Lauer  
KGS President 2020

---

**2020 AAPG ACE  
Annual Convention and Exhibition  
Houston, TX  
Postponed until further notice**



# Robert F. Walters Digital Library

The most complete source for Kansas data

Database updated nightly

Day or Night

You can get to the data as you need it

[www.kgslibrary.com](http://www.kgslibrary.com)

To Join: call 316-265-8676



*The KGS Library is pleased to announce a new service*

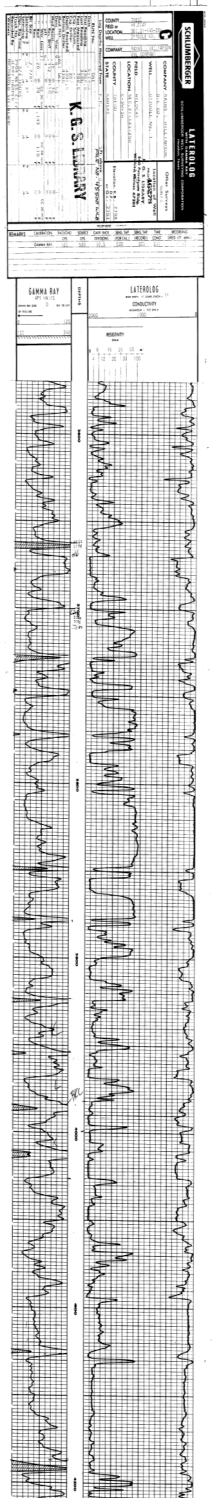
Creating  
LAS files  
from our logs  
or yours

**\$20.00 per  
curve!!**

Quick  
turn-around

Send us your log file  
or tell us which of  
ours you would like  
converted.

**316-265-8676**



## The Following Are For Sale

*Kansas Completion Cards:*  
Several sets (call for more information)

*Oklahoma Completion Cards*

*New Mexico Completion Cards*

*North Dakota Completion Cards*

*Utah Completion Cards*

*Microfiche Electric Logs*  
Kansas  
Oklahoma  
Texas

### Geological Office Furniture:

- 8-drawer completion card cabinets
- 7-drawer cabinets
- Map cabinets—metal—2 available
- Map racks—different sizes

**Call: 316-265-8676**

# Minutes of the KGS Board of Directors Meeting

## KANSAS GEOLOGICAL SOCIETY BOARD OF DIRECTORS MEETING

April 14<sup>th</sup>, 2020  
12:00 PM \*Via Zoom\*

### ATTENDANCE & QUORUM:

#### Officers & Directors: Advisors & Guests

Tim Lauer – President	Brian Fisher - VP
Tom Dudgeon – Secretary	Wes Hansen– Director
Doug Davis – Director	John Hastings – Director
Doug Louis–Advisor	Kevin Davis–Advisor

**Absent:** Bob Stolzle – Treasurer

- I. **Call to Order** - Mr. Lauer called the meeting to order at 12:05 PM via Zoom Meetings
- II. **President’s Statement** - May the times you live in be interesting...
- III. **Society Activities/Events Update**
  - A. All social activities and technical meetings postponed until further notice – due to social distancing
    - i. **Upcoming Tech talks:**
  - B. Doug Davis will let upcoming speakers know when the social gathering limits are lifted and will express our thanks to all including those who prefer to reschedule until later.
  - C. Doug cancelled April speakers, not yet contacted May speakers
- IV. **Approval of March 10th, 2020 Minutes** –Mr. Davis made a motion to accept minutes, Mr. Fisher seconded and were unanimously approved
- V. **Financial Report**
  - A. Money has been moved from WDL Checking account and Mid American Money Market accounts. Mid American account closed (approx. \$106,500) and WDL checking moved \$150,000 leaving larger balance in WDL account due to last month’s instability.
  - B. Monies moved to Vanguard Short-Term Bond Index Fund Admiral Shares (VBIRX) fund.

- C. Finance Committee clarified deposits could be made every 30 days, not 60 days or quarterly. Plan is to move ¼ funds into the Vanguard Funds as recommended by the Finance Committee, as soon as possible when funds hit VBIRX account.

D. Managers Report –Nothing Yet

## VI. Old Business

A. The Building Committee update

- i. Knights of Columbus Building – orig. asking price \$450,000

- a. See Below

- b. Kerry Parham to be inspected building, no major flaws, and no charge to KGS.

- ii. Going to auction on April 29<sup>th</sup>, 2020

- a. Building Comm. supports bidding at lowball price only- \$75K max bid.

B. Survey Questions for membership to be sent via email – Survey Monkey completed, not yet sent. Will wait 30-45 days - 10 questions are free to us, any more and they start to charge.

C. IOG Proposal – tabled for now – everything has blown up since Tim’s last meeting with John Morrison, Tim will speak with John to update him of our continued interest.

## VII. New Business

A. Auction of Knights of Columbus building April 29<sup>th</sup>, 2020

- i. Bldg. Comm. recommend a low bid in event it goes very inexpensively

- ii. 10% buyer premium for Auction- demo costs, update costs, -insurance plan for library to store data to keep local, but not quite usable access like we have now at the present.

- iii. It’s basically going to be a storage vault at this point, without remodeling

- iv. \$2800/month taxes, utilities and insurance

- v. Mr. Fisher makes motion, seconded by Mr. Hansen, to bid on the building based on the Building Comm. recommendation, up to a max \$75,000. Measure passes on a 5-2 vote.

- vi. No KGF fundraising, part of the reason the bldg. committee wants scanning done.

- vii. Mr. Hansen made a motion for a Secondary vote of \$99K max bid on the building all in (including 10% buyer’s premium), Seconded by Mr. Fisher, Vote of 5-2 Passed to increase max bid.

B. Funds moved to Vanguard holding account to be invested every 30 days after initial move to Vanguard Wellesley Fund

- a. Volunteers for helping move the money (oversight while transaction is conducted online) from the IBX account to the Wellesley Fund? - Mr. Lauer and Mr. Hansen will be there moving \$76K moving in the next week 1/4<sup>th</sup> of the 300K approved previously

# Minutes of the KGS Board of Directors Meeting

## C. Card update Status

- a. We were 7-8 months behind in scanning, linking and filing of cards.
- b. Over 2000 cards have been scanned, with roughly 1600 already linked to the WDL, and half of cards now filed.
- c. Cards are continuing to be linked.

## D. Special pricing on WDL waiving Paper Library subscription

E. The KGS Board shall approve a special price offering for a 6-month WDL subscription at \$200. This special price will last from approval date through the end of April 2020. New subscribers and existing WDL members can obtain a 6-month new, or extended subscription at this same \$200 price. Paper Library membership subscription is also waived and not required for this special pricing.

i. Vote circulated via email, passed 6-1.

b. We have sold 24 memberships through April 10 at our special price.

F. President Lauer was contacted by Cindy McSwain at AGH for assistance under the CARES act recently passed. At his direction Cindy is filling out the paperwork on behalf of the Library. Once that is completed, Board members who are signatories on our Intrust account will sign the application papers and hopefully we can get some Payroll relief.

a. The Payroll Protection Program is a loan of roughly 2.5 times the monthly payroll. The loan is forgiven if the money is used for payroll.

b. If a vote is needed should we call for one? All were in favor – it's free money!

G. Petroleum Club currently closed to the public, will notify when we can use it again.

H. Thanks to all for meeting this way and thanks for your support of our Society

I. Mr. Stolzle's Recent Graduate Membership Program for the KGS was discussed; a hand-out was circulated at the last meeting. This plan would give 2020 university graduates in the state of Kansas free memberships for 1 year. They would be responsible for costs of hard copies and downloads the same as any member.

i. Mr. Hastings made a motion to approve free graduate memberships, to all Kansas college geology graduates, a KGS Paper and WDL Digital Library; Seconded by Doug Davis, the motion was approved unanimously.

## VIII. Adjournment

Mr. Hansen made a motion to adjourn, which was seconded by Mr. Hastings. Mr. Lauer adjourned the meeting at 1:15 PM.

**KANSAS GEOLOGICAL SOCIETY  
BOARD OF DIRECTORS MEETING  
May 12, 2020**

**No meeting was held as there was no pressing business. Covid-19 precautions were in effect. The Petroleum Club remained closed. An informal vote by board members via email was held with the decision being made to cancel the May meeting and reconvene in June.**

**Editor's Note: From an old geezer**

On April 20, I pulled up the Bloomberg page to check oil prices. At first I thought the -295% change in price had to be some kind of a glitch. Sadly this was not the case. The worst price I saw was \$-37.90. I had already learned in previous days that some of the local geologists had either lost their jobs or had been forced to take a cut in pay because of the low oil price. If we can safely get past this Covid-19 pandemic, we can get the world economies moving again. Our older members in their late 60's and beyond probably can endure this time.

My sincere hope is that our younger members can find a path forward until better times return. From my own experience, fellow geologists that I knew in the 80's moved out of the oil business for awhile to feed their family and pay the rent. Some of these old friends jumped back in the oil patch in better times over the years. Others just stayed out because they had found a more secure livelihood. I and others of my generation have seen downturns of varying degrees over the last 40 years. Most of us persevered.

I encouraged the younger members of our society to keep their hand in the oil business, even if you have to move away from the business for awhile. Our library and society will do all we can to help you through these times. **As of Mid-June, WTI is near \$40/bbl We are slowly getting back to business.**

Please email me at [manager@kgslibrary.com](mailto:manager@kgslibrary.com) with thoughts or ideas of how the KGS can be of help.

Hold strong,

Wes Hansen

# Robert F. Walters Digital Library

The most complete source for Kansas data

## Database updated nightly

Day or Night

You can get to the data as you need it

# www.kgslibrary.com

To Join: call 316-265-8676

The screenshot displays the Robert F. Walters Digital Library website interface. At the top, there is a search bar and navigation options. Below the search bar, a table lists well data with columns for APINo., County, Sec, Twp, Rgn, Operator, Lease Name, Well No., Spoc, Locarcon, NS, EW, Spud, Completion, Depth, E1B, E1F, E1G, and Status. The table contains several rows of data for wells in Comanche County, Kansas.

Below the table, there are three preview windows:

- Completion Card - 100**: A document titled "COMPLETION CARD" for well Z0A7, operated by BARBARA OIL CO. It includes details like "Contr. PICKRELL" and "P. 805088 Comm. T".
- Drill Stem Test**: A document titled "DRILL STEM TEST" for well Z0A7, operated by BARBARA OIL CO. It includes details like "BR LM" and "LANC CRE SA".
- Well Log**: A detailed well log for well Z0A7, operated by BARBARA OIL CO. It includes sections for "TEST DATA" and "SURFACE DATA". The test data section shows a test performed on 02/15/08 at a depth of 100 feet, with a flow rate of 1.000 gpm. The surface data section shows a well depth of 400 feet and a casing depth of 25 feet.



# An Open Invitation to Young Geologists to Join AAPG

I would like to extend a special invitation to recent graduates and other young geological professionals to join AAPG. There are many young geologists outside the Wichita area that I have never met. They may work out of Great Bend or Hays, Kansas working with smaller oil and gas producers or working on their own as well site geologists. Kansas does have a future for the foreseeable future. The time is now to meet others from larger regional companies to forge a relationship for future employment. Young minds will be needed to replace those retiring and that other bad option.

I joined AAPG late in my career, much to my regret. I now serve voluntarily as a delegate for the Mid-Continent Section representing the Kansas Geological Society.

Respectfully yours,

Wesley D. Hansen  
Bulletin Editor and AAPG Delegate

**Get Your Maps copied at the KGS library**  
**We can scan, copy, and print up to 44" wide**  
**Color or Black & White**  
**Solid Color @ \$4.00/sq. ft.**  
**Line maps with color @ \$3.00/sq. ft.**

# PROFESSIONAL DIRECTORY

**Kirk Rundle**  
**Consulting Geophysicist**  
 3D Seismic Design, Acquisition to Processing QC.,  
 Interpretation and Analysis, Subsurface Integration  
 7340 W. 21st. N., Ste. 100  
 Wichita, Kansas 67205

Office: 316-721-1421 Fax: 316-721-1843  
 Email: kirk@rundlegeo.com

**ROGER L. MARTIN**  
*Independent Petroleum Geologist*  
 200 E 1st St, Ste 405, Wichita, KS 67202

Cell: 316-833-2722 Office: 316-250-6970  
 KS Field Cell: 316-655-1227  
 Fax: 316-425-3829  
 Email: rogermartingeo@yahoo.com

**Covey - The Well Watchers**  
*One Thousand Wells and Counting"*

**Curtis E. Covey Wellsite Petroleum Geologist**

Gas Trailer Cell: 316-217-4679 Office: 316-776-0367  
 Email: wellsitegeol@gmail.com 6548 Bedford Circle  
 Derby, Kansas 67037

**ALFRED JAMES III**  
**Petroleum Geologist**  
 Kansas - Colorado - Utah

P.O. Box 218 Augusta, KS 67010

SIPES # 1111  
 Office: 316 648-2821  
 james.alfred21@yahoo.com

 **GRAVITY OIL LLC** **ELI J. FELTS**  
 CONSULTING PETROLEUM GEOLOGIST

316.204.5059 EJFELTS47@GMAIL.COM

- VERTICAL & HORIZONTAL WELL-SITE SUPERVISION
- PROSPECT GENERATION & EVALUATION
- WELL-LOG ANALYSIS
- DIGITAL MAPPING SERVICES & GEOLOGICAL REPORTS
- KCC & COMPLIANCE SPECIALIST
- PROFESSIONALLY INSURED


COMPETITIVE PRICING & STATE OF THE ART SERVICES YOU CAN COUNT ON  
 CALL TODAY & RECEIVE (1) FREE DAY WELL-SITE TO NEW CLIENTS

**M. ((Brad))ford Rine, Geologist**  
*Licensed, Registered, Certified*

PROSPECT EVALUATION	PROSPECT ORIENTATION
WELL-SITE SUPERVISION	DRLG/COMPL CONSULTATION
RESERVOIR STUDIES	PROPERTY EVALUATION
EXPERT TESTIMONY	BANJO PICKER

100 South Main Suite #415 Wichita, Kansas 67202  
 Email: rinemb@sbcglobal.net Office & Cell: (316) 250-5941

**WESLEY D. HANSEN**  
**Consulting Geologist**  
 Well site Supervision • Geologic Studies  
 212 N. Market, Ste 257  
 Wichita, Kansas 67202  
 Office/Mobile: ( 316) 772-6188  
 whansen4651@sbcglobal.net  
 38 Continuous Years in the Kansas Oil Patch

 **DeGood Geological Services**

**Alan DeGood**  
 Kansas Licensed Geologist #330

1233 Autumn Drive  
 Goddard, KS 67052  
 Phone: 620-242-6301  
 Home: 316-794-8391  
 Email: degood1@live.com

Prospect Reviews  
 Reserve Studies  
 Rendition Preparation

**IOGSI INDEPENDENT OIL & GAS SERVICE, INC.**  
*Digital Well Data You Can Trust*

**JOHN H. MORRISON, III**  
 President

www.IOGsi.com Phone: 316-263-8281  
 226 N. Emporia Ave Fax: 316-263-0874  
 Wichita, Kansas 67202 Email: jmorrison@iogsi.com

**MELLAND ENGINEERING, INC.**  
*Petroleum Engineering & Geological Consulting*

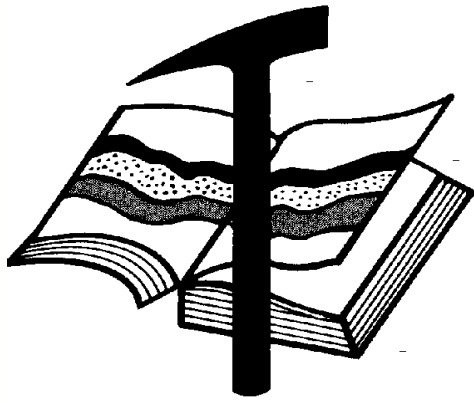
**James E. Melland, P.E., P.G.**  
 President  
 Office: (620) 241-4621 Fax: (620) 241-2621

jamesm@mellandengineering.com  
 www.mellandengineering.com

**P.O. Box 841, McPherson, KS 67460**

**Your business card ad  
 Could be right here  
 For only \$90/year**

**Your business card ad  
 Could be right here  
 For only \$90/year**



# Kansas Geological Foundation

Web Site: [www.kgfoundation.org](http://www.kgfoundation.org)

**212 North Market  
Wichita, Kansas 67202**

A not-for-profit educational and scientific corporation

## **GOALS:**

- promote geology and earth science
- preserve geological records
- establish memorials and endowments
- support field trips and seminars
- financial aid and grants to students

**PLEASE HELP SUPPORT THE FOUNDATION**

## **Kansas Geological Foundation Services**

The Kansas Geological Foundation provides the following services as a part of the organization's commitment to educate the public regarding earth science.

### **Speaker's Bureau**

A list of speakers available to talk about various aspects of geology may be obtained by contacting Wes Hansen at the KGS Library, 265-8676. This service is free to the public.

### **DVD/Videotape Library**

The KGF maintains a DVD & videotape library focused primarily on the various fields of earth science. These tapes may be checked out without charge by the public. To obtain a list of tapes, please contact the KGS Library, 212 N. Market, Ste. 100, Wichita, KS 67202, or call Wes Hansen at 265-8676.

The Kansas Geological Foundation was founded in March, 1989 as a not-for-profit corporation under the guidelines of section 501(c)(3) of the tax code to provide individuals and corporations the opportunity to further the science of geology. It is dedicated to providing charitable, scientific, literary and educational opportunities in the field of geology for the professional geologist as well as the general public.

KGF can receive in-kind donations through which the donor may receive a tax deduction. Of equal importance, the KGF provides the financial resources to sort, process and file this data at the KGS library. If you have a donation to make, please contact the KGF at 265-8676.

Your tax-deductible membership donation helps to defray the cost of processing donations and to support public education programs about the science of geology. Annual membership begins at \$50.00 per year. Donations of \$100.00 or more are encouraged through the following clubs:

<b>Century Club</b>	\$ 100 to \$ 499
<b>\$500 Club</b>	\$ 500 to \$ 999
<b>Millennium Club</b>	\$1000 to \$5000
<b>President's Club</b>	\$5000 and over

# *Kansas Geological Foundation*

## *Cornerstone*

### *Kansas Geological Foundation News*

#### Fall 2020 Scholarship Recipients

<b>Applicant</b>	<b>University</b>	<b>Scholarship</b>	<b>Amount</b>
Ali Roustezadeh	Kansas State Univ.	Robert Cowdery Scholarship	\$1000
Barabas Adeymi	Kansas State Univ.	KGF Scholarship	\$500
Sara Lamn	Kansas State Univ.	KGF Scholarship	\$500
Benjamin Walters	Kansas State Univ.	KGF Scholarship	\$500
Isaac Allred	University of Kansas	KGF Scholarship	\$500

<b>Applicant</b>	<b>University</b>	<b>Scholarship</b>	<b>Amount</b>
Olivia Jones	University of Kansas	KGF Scholarship	\$500
Will Swanson	University of Kansas	KGF Scholarship	\$500

#### KGF Grants

Dr. Hendratta Ali of Fort Hays State University  
Awarded in December of 2019 \$1000.00

# *Kansas Geological Foundation News*

Students: The KGF awards scholarships each December and May. Check with your department chairs for applications. You must submit complete applications by the deadline.

**Scholarship Applications for the Spring semester will be due by December 1, 2020.**

Grants to help with research on Kansas related geology are also considered for aid.

If you are in the KGS Library and see Ted Jochems or any of the integrators, give any of them a great big thanks for their efforts in continuing the tedious process of examining, scanning and integrating new logs and geologist's reports etc. into our library and the WDL.

---

## **The Kansas Geological Foundation Needs You!**



By permission

The KGF provides the financial resources to sort, process and file, in-kind donations of geological data at the KGS library. Due in large part to the KGF this unique and rare well of information is being made available to all. Please consider telling your company management and colleagues about the benefits of a library that continues expanding in part because of the KGF.

**We very much value and need your financial support.**

## **Integration Update as of April, 2020**

From 01 January to 30 April, 2020, 11,728 well logs were examined by the integrators. 1,229 (10.5%) were new logs for the Walters Digital Library. 1,799 logs were re-scanned to replace poor existing digital images. The two integrators were working from home during much of this period due to the Covid-19 quarantine. They could compare donated logs to the WDL from home, but could not scan logs. Therefore, the numbers of new and re-scanned logs are presently incomplete. The full count will be reported later after scanning is complete.

**PLEASE SUPPORT THE INTEGRATION PROJECT BY DONATING FINANCIALLY TO THE KANSAS GEOLOGICAL FOUNDATION**

Submitted by Ted Jochems

## **KGF Officers and Board Members**

**President- Dennis Hedke**  
**Vice President - Michel Runnion**  
**Treasurer - Corey Baker**  
**Secretary - Ted Jochems**

## **Board Members**

**Dave Callewaert**      **Mark Galyon**  
**Larry Friend**        **Ryan Dixon**  
**Mark Thompson**

---

**Scholarships - Maurice Korphage**  
**Publicity - Wes Hansen**

# Kansas Geological Foundation Memorials

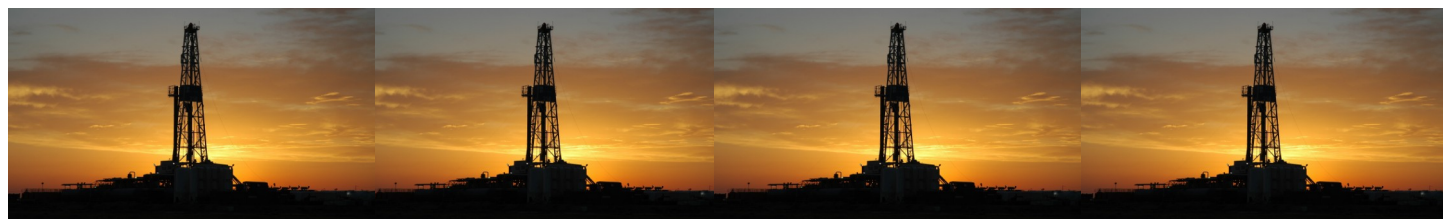
KGS Member	Date Deceased	Memorial Established
Dan Bowles	09/89	1990
John Brewer	10/89	1990
George Bruce	08/89	1990
Robert Gebhart	01/90	1990
Ray Anderson, Jr.	11/90	1990
Harold McNeil	03/91	1991
Millard W. Smith	08/91	1991
Clinton Engstrand	09/91	1991
M.F. "Ted" Bear	10/91	1991
James & Kathryn Gould	11/91	1991
E. Gail Carpenter	06/91	1993
Benton Brooks	09/92	1992
Robert C. Armstrong	01/93	1993
Nancy Lorenz	02/93	1993
Norman R. Stewart	07/93	1993
Robert W. Watchous	12/93	1993
J. George Klein	07/94	1994
Harold C.J. Terhune	01/95	1995
Carl Todd	01/95	1995
Don R. Pate	03/95	1995
R. James Gear	05/95	1995
Vernon Hess	06/95	1995
E. K. Edmiston	06/95	1995
Jack Rine	07/95	1995
Lee Cornell	08/95	1995
John Graves	10/95	1995
Wilson Rains	10/95	1995
Heber Beardmore, Jr.	09/96	1996
Elmer "Lucky" Opfer	12/96	1996
Raymond M. Goodin	01/97	1997
Donald F. Moore	10/92	1997
Gerald J. Kathol	03/97	1997
James D. Davies	08/88	1997
R. Kenneth Smith	04/97	1997
Robert L. Dilts	05/97	1997
Delmer L. Powers	06/72	1997
Gene Falkowski	11/97	1997
Arthur (Bill) Jacques	01/98	1998
Bus Woods	01/98	1998
Frank M. Brooks	03/98	1998
Robert F. Walters	04/98	1998
Stephen Powell	04/98	1998
Deane Jirrels	05/98	1998
William G. Iversen	07/98	1998
Ann E. Watchous	08/98	1998
W.R. "Bill" Murfin	09/98	1998
Donald L. Hellar	11/98	1998
Joseph E. Rakaskas	01/99	1999
Charles W. Steincamp	02/99	1999
Robert and Betty Glover	10/96	1998
Howard E. Schwerdtfeger	11/98	1999
W. W. "Brick" Wakefield	03/99	1999
V. Richard Hoover	01/00	2000
Warren E. Tomlinson	01/00	2000
James A. Morris	01/00	2000
Eric H. Jager	03/00	2000
Kenneth W. Johnson	03/00	2000

# Kansas Geological Foundation Memorials

KGS Member	Date Deceased	Memorial Established
Dean C. Schaake	03/00	2000
Fred S. Lillibridge	05/00	2000
Jerry A. Langrehr	07/00	2000
Clark A. Roach	07/00	2000
Floyd W. "Bud" Mallonee	10/00	2000
Ralph W. Ruuwe	09/00	2000
Robert L. Slamal	02/01	2001
Jerold E. Jespersen	06/01	2001
William A. Sladek	06/01	2001
Harlan B. Dixon	06/01	2001
Edward B. Donnelly	08/01	2001
Richard P. Nixon	02/02	2002
Robert W. Frensley	12/01	2002
Gerald W. Zorger	01/02	2002
Don L. Calvin	03/02	2002
Claud Sheats	02/02	2002
Merle Britting	2002	2002
Harold Trapp	11/02	2002
Donald M. Brown	11/02	2003
Elwyn Nagel	03/03	2003
Robert Noll	09/03	2003
Benny Singleton	09/03	2003
Jay Dirks	2003	2003
J. Mark Richardson	02/04	2004
John "Jack" Barwick	02/01	2004
Richard Roby	03/04	2004
Ruth Bell Steinberg	2004	2004
Gordon Keen	03/04	2004
Lloyd Tarrant	05/04	2004
Robert J. "Rob" Dietterich	08/96	2004
Mervyn Mace	12/04	2004
Donald Hoy Smith	04/05	2005
Richard M. Foley	06/05	2005
Wayne Brinegar	06/05	2005
Charles B. Moore	09/96	2005
Jack Heathman	05/06	2006
Charles Kaiser	09/06	2006
Rod Sweetman	08/06	2006
Karl Becker	10/06	2006
Frank Hamlin	10/06	2006
Marvin Douglas	12/06	2006
Robert W. Hammond	04/07	2007
Eldon Frazey	04/07	2007
Pete Amstutz	05/07	2007
Charles Spradlin	05/07	2007
Donald R. "Bob" Douglass	09/07	2007
Vincent Hiebsch	11/07	2007
Glen C. Thrasher	03/08	2008
Peg Walters	06/08	2008
Theodore "Ted" Sandberg	07/08	2008
James Ralstin	11/08	2008
Earl Brandt	04/09	2009
Walter DeLozier	05/09	2009
Don D. Strong	1/10	2010
John Stone	02/10	2010

# Kansas Geological Foundation Memorials

KGS Member	Date Deceased	Memorial Established
Craig Caulk	03/10	2010
Joseph E. Moreland, Jr.	03/10	2010
Gene Garmon	03/10	2010
James F. Dilts	05/10	2010
Jerry Pike	05/10	2010
Donald Hollar	06/10	2010
Delbert Costa	08/10	2010
John Tanner	08/10	2010
William (Bill) Owen	09/10	2010
Harold (Hal) Brown	10/10	2010
Edmund G. Lorenz	11/10	2010
Thomas E. Black	05/11	2011
Wayne E. Walcher	07/11	2011
Henry F. Filson	07/11	2011
Thomas Ray	07/11	2011
Edgar E. Smith	09/11	2012
Marilyn Messinger	06/13	2013
Micheal Mitchell	09/13	2013
Orvie Howell	11/13	2013
James Thompson	11/13	2013
Dick Rowland	09/13	2014
Robbie Thompson	12/13	2014
Kris Kennedy	04/14	2015
Annette Hedke	02/15	2015
James Devlin	04/15	2015
Robert Gensch	09/15	2015
Jerald Rains	05/16	2016
Max Houston	05/16	2016
Robert "Gus" Messinger	01/17	2017
Jimmy Wayne Gowens	04/17	2017
Walter H. Martz Jr.	01/18	2018
Gary Sandlin	01/17	2018
Douglas McGinness	12/16	2018
Allen Siemens	06/18	2018
Ernest R. "Ernie" Morrison	09/18	2018
E. G. "Elbie" McNeil	12/18	2018
Robert Maxwell (Bob) Euwer	1/19	2019
J. Fred Hambright	12/18	2019
W. Lynn Watney	7/19	2019
Byron Hummon	12/18	2019
Mike Raymond	11/19	2019
James Roberts, Jr.		
Herb Johnson		
Lloyd Parrish		





18 Drilling Rigs

To depth of 9,500 ft.



WESTERN KANSAS  
SOUTHERN NEBRASKA  
EASTERN COLORADO

For contract information contact:

**William Murfin**  
Drilling Manager

316-258-8888 (Direct)  
316-267-3241 (Main)

250 N. Water, Ste. 300  
Wichita, KS 67202

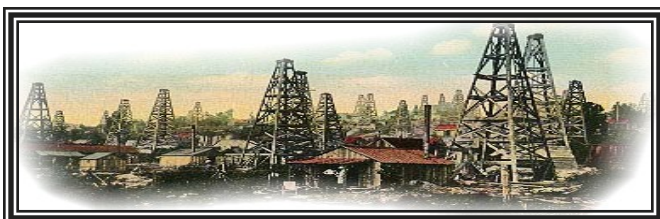
The logo for Duke Drilling Company features the word "DUKE" in large, bold, black letters at the top. Below it, a silhouette of a drilling rig is centered. The words "DRILLING" and "COMPANY" are written in bold, black letters on either side of the rig. Below the rig, the text "ROTARY DRILLING CONTRACTOR" is written in a smaller, bold, black font. At the bottom, contact information is provided: "620 Hubbard PO Box 823 Great Bend, KS 67530 Phone 620-793-8366" on the left and "100 S. Main, Ste. 410, Wichita, KS 67202 Phone 316-267-1331 Fax 316-267-5180" on the right.

*Your Company*

*1/8 page ad here*

### BULLETIN CONTENT POLICY

Effective January 1, 2018, only ads for service companies and geologists offering their services will be permitted in the KGS Bulletin. Furthermore, only content of geologic interest or official KGS functions (technical talks, annual banquet, golf tourney, picnic etc.) will be permitted in this bulletin. This policy is in keeping with maintaining a professional standard for this publication. Any interpretation of this policy rests solely with the editor of this bulletin.



### **AAPG Needs You!**

**Professional geoscientists, share your world!**

The Mid Continent Section has 17 AAPG Student Chapters, but only 3 Visiting Geoscientists...which makes it almost impossible to have a professional geoscientist visit to each school at least once a year or even once every two years. The aim of AAPG's program is to give students a flavor of a professional life in energy resources. It also hopes to encourage dialog between industry and academia.

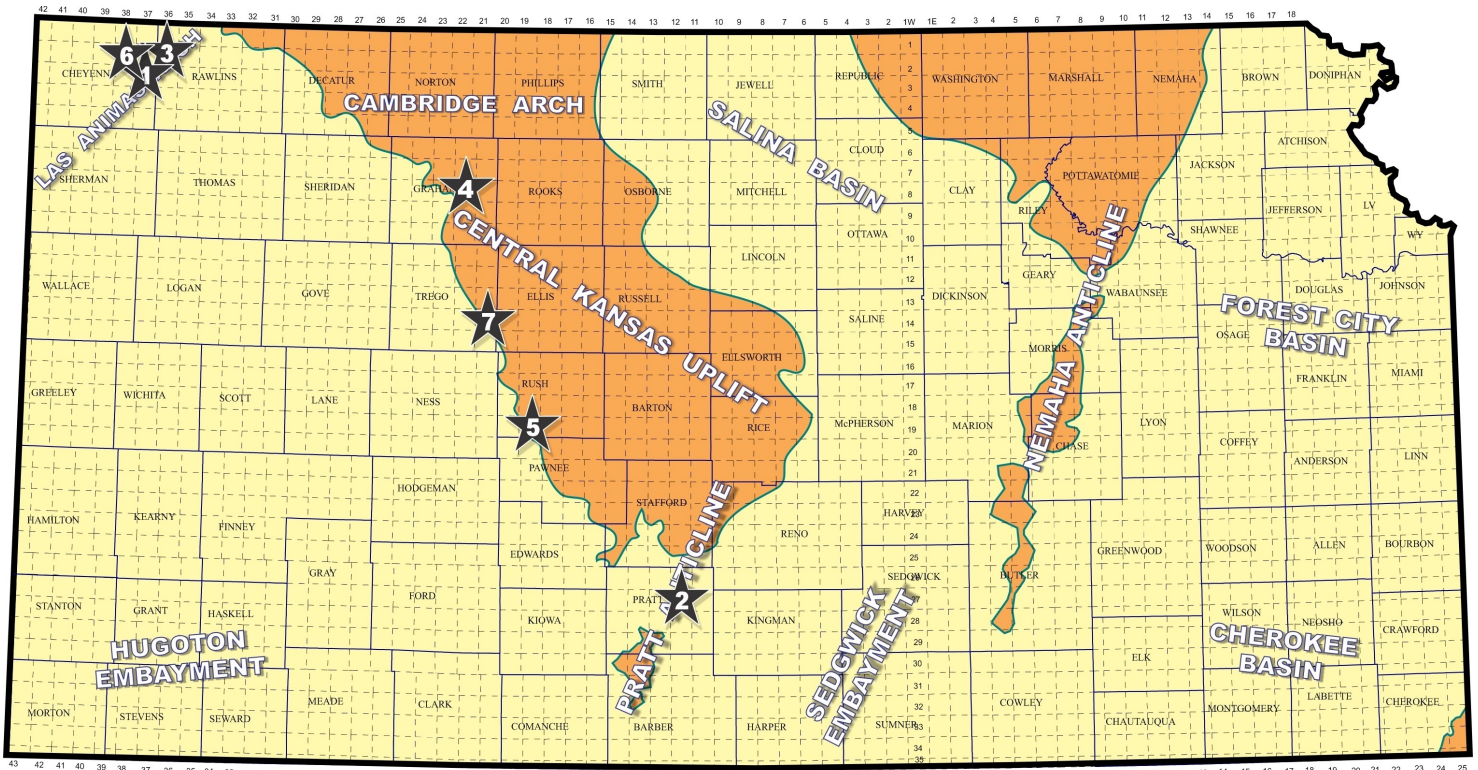
To be a Visiting Geoscientist bearing the AAPG flag, you are asked to have at least 5 years of experience and make at least one visit per year to a university. It can be a school with an AAPG Student Chapter, or a college/university without one. Your choice.

The Mid Continent schools with Student Chapters are: Missouri University, Fort Hays State University, Iowa State University, Kansas State University, Missouri State University, University of Nebraska, Northwest Missouri State University, Oklahoma State University, University of Oklahoma, University of Arkansas, University of Iowa, University of Kansas, University of Missouri, Columbia University of Tulsa and Wichita State University.

Contact Robbie Gries, co-Chair VGP committee, Denver, if you are interested in learning more. [rrgries@aol.com](mailto:rrgries@aol.com)

# Exploration Highlights

By John H. Morrison, III  
Independent Oil & Gas Service



Map courtesy of Marc Summerville

- 1. MURFIN DRILLING COMPANY**, Wichita (KS), has successfully drilled and completed its #1-6 Burr to open the new Buffalo Plains Northwest oil field in Cheyenne County. The new discovery was drilled to a total depth of 5100 ft. Drill site is spotted in the NE SE SE of section 6- T3s- R37W, about four miles north and one mile east of the town of Bird City, Kansas. Commercial production was established from the Lansing-Kansas City formation. No completion details have been released. Saman Shari-faie served as wellsite geologist. This makes the 18th oil/gas field to be discovered by Murfin in Cheyenne County since their exploration began in the late 1970's. (ref: API 15-023-21530)
- 2. ARCADIAN RESOURCES LLC**, Concordia (KS), has discovered Mississippian oil deposits at the #1-27 Green High in Pratt County. Operator hired Fossil Drilling Rig #2 to drill the well to a total depth of 4500 ft. (4502 LTD). Site is located approximately NW SE SW of section 27- T27s- R12W. Drill stem shows were noted in the Lansing-Kansas City, Marmaton and Mississippian formations. Perforations were shot in the Mississippian from 4100 to 4136 ft. and 4156 to 4162 ft. Pay zones were acidized and fracture treated. No production information has been reported. Arcadian's Lunt East pool discovery well found the new reserves over one mile north of the Lunt Southeast field (estab. 3/23/2019, LKC oil) and is four miles northwest of Cairo, Kansas. (ref: API 15-151-22504)
- 3. BLACK OAK EXPLORATION**, Denver (CO), has a new Lansing-Kansas City oil discovery in Rawlins County, northwest Kansas. The #1-14 Frisbie Family is producing 34 BO and 51 BWPD from 'A' zone perforations shot between 4248-4252 ft. and in the 'H' zone from 4410-4421 ft. Production began March 6, 2020. Murfin Drilling's Rig #7 drilled the well to a rotary total depth of 4885 ft. at location in approximately N2 NE NE SE in section 14- T2s- R36W. Closest recognized production nearby can be found nearly one mile to the east in the one-well Energy North field in the SE/4 of section 15. In July

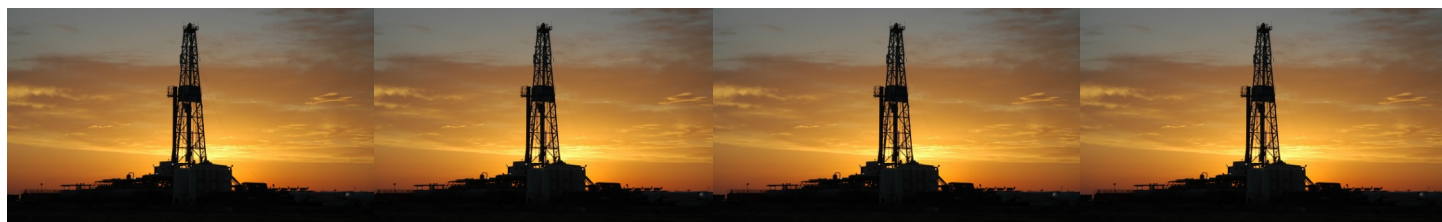
2015, Samuel Gary Jr. & Associates completed the #1-15 Frisbie for 26 BOPD from the Topeka and Lansing-Kansas City zones. Black Oak's new oil field has not been named. It is located about six miles north and two miles east of McDonald, Kansas. (ref: API 15-153-21244)

**4. COBALT ENERGY LLC**, Wichita (KS), has successfully expanded the Hatcher Northwest oil field in Graham County with the discovery of new Arbuckle oil pay source. Cobalt established the Hatcher Northwest pool in late 2018 when the #1-36 Elizabeth A, SE/4 of section 36- T8s- R22W, averaged 87 BOPD with production coming from the Lansing-Kansas City formation. Operator drilled their first step out well, #2-36 Elizabeth A, three-quarters mile west of the pool discovery well in the SW/4 of section 36. The #2-36 encountered oil deposits in the Arbuckle Dolomite and has been designated as an infield wildcat discovery in the pool. Murfin Drilling tools drilled the well to a rotary total depth of 3801 ft. Field area is located about three miles south and six miles east of Hill City, Kansas. Well details remain confidential currently. (ref: API 15-065-24182)

**5. SHELBY RESOURCES LLC**, Lakewood (CO), has established a new oil field in Rush County with the completion of the #1 Maresch Unit, drilled in approximately the SW SW NW NW of section 32-T19s-R19W. Discovery Drilling's Rig #4 bottomed the hole at a rotary total depth 4764 ft. The well is completed and on pump making 25 BO and 66 BOPD from perforations shot in a Cherokee Sand section from 4265-4267 ft. Jeremy Schwartz and Jeff Zoller were on site to supervise geological operations. The new Maresch discovery lies over three-quarters mile east of multi-pay production in the Shiley North pool (estab: 1961 - LKC, Cherokee and Marmaton oil), and about seven miles south and five miles east of the town of Alexander, Kansas. (ref: API 15-165-22171)

**6. MURFIN DRILLING COMPANY**, Wichita (KS), has recovered crude oil from the Lansing-Kansas City formation at the #1-24 Dorsch, spotted in C N/2 NW SE in section 24- T2s- R 38W, in Cheyenne County, northwest Kansas. Discovery site is located about one mile west of Murfin's #1-20 Culwell (G) that was completed in early 2018 for 250 BOPD in the NW/4 of section 20. The Culwell (G) produced oil from the Lansing-Kansas City and Cherokee zones, resulting in the establishment of the Ken Southwest field. The new Dorsch discovery lies seven miles north of Bird City, Kansas. Brad Rine served as well site geologist. All drilling and completion information remains confidential. (Ref: API 15-023-21533)

**7. DOWNING-NELSON OIL COMPANY**, Hays (KS), has added new oil pay production to the Sunny Slope Northeast field in Trego County. Downing-Nelson first discovered the field in 2006 when their #1-14 Stalnaker - Dinkel well in the SE SW of section 14- T14s- R21W produced 45 BOPD from the Marmaton formation. In 2013, they completed their second well, #1-14 Stalnaker B, NW SW in section 14, for 50 BOPD from the Marmaton. Now, operator has stepped out over five-eighths mile to the southeast and drilled the #1-23 Alson in approximately NW NE SE NE in section 23. The infield wildcat has discovered new Lansing-Kansas City oil reserves within the pool and is producing 15 BO and 4 BOPD from perforations placed between 3686-3690 ft. Discovery Drilling's Rig #2 drilled the well into the Arbuckle at a total depth of 4038 ft. Field area is located nearly seven miles south and two miles west of Ellis, Kansas. (ref: API 15-195-23092)



**CHANGE SERVICE REQUESTED**

KGS BULLETIN  
 July - August 2020

## July 2020

Sun	Mon	Tue	Wed	Thu	Fri	Sat
			1	2	3 KGS Library Closed	4
5	6	7	8	9	10	11
12	13	14 KGS Board	15	16	17	18
19	20	21	22	23	24	25
26	27	28	29	30	31	

## August 2020

Sun	Mon	Tue	Wed	Thu	Fri	Sat
						1
2	3	4	5	6	7	8
9	10	11 KGS Board	12	13	14	15
16	17	18	19	20	21	22
23	24	25	26	27	28	29
30	31					